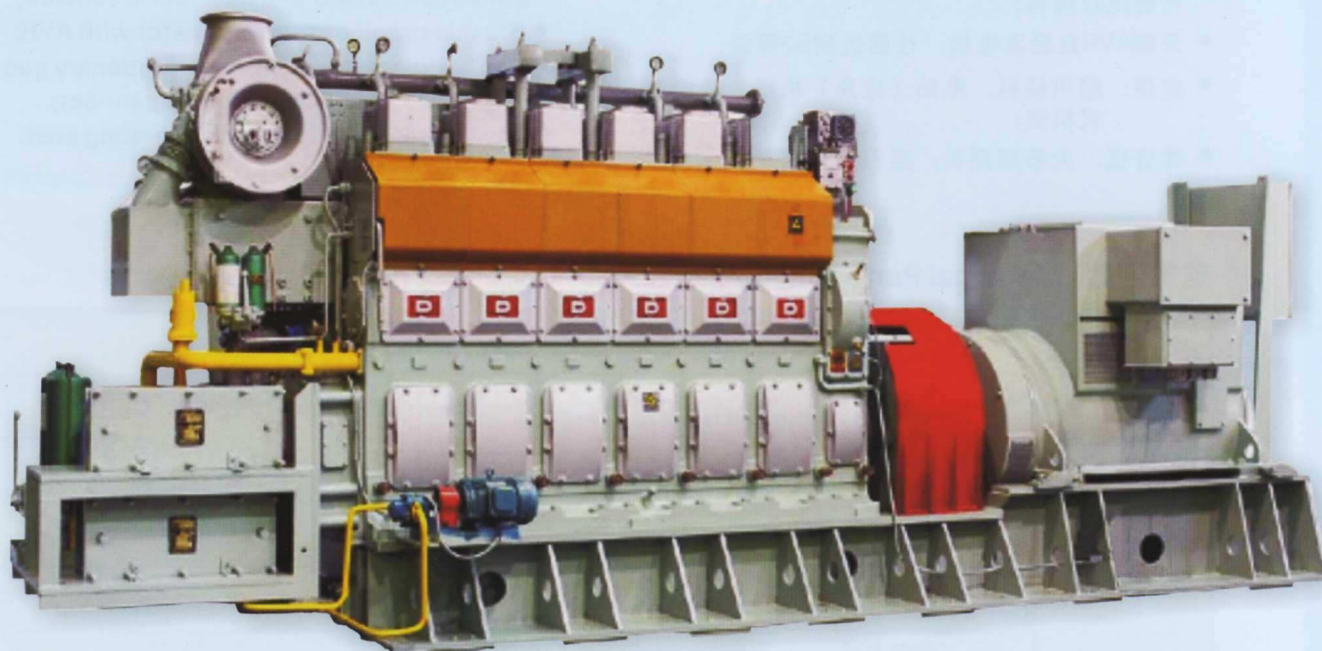


21/30 Engine Driven Generator



主要技术规格 Main Specifications

机组型号 Generator Model	500GF	600GF	800GF	1000GF	1250GF
机组额定功率 (kW) Rated Output	500	600	800	1000	1250
柴油机型号 Engine Model	N6210ZD12	N6210ZD4	N6210ZD18	N8210ZD	N8210ZD4
缸径x行程 (mm) BorexStroke	210x300				
柴油机型式 Engine Type	四冲程、直列式、直接喷射、增压中冷 4-Stroke, Inline, Direct Injection, Turbocharged, Intercooled				
柴油机额定功率 (kW) Engine Rated Power	551	662	882	1103	1471
转速 (rpm) Speed	50Hz@750 60Hz@720	50Hz@750 60Hz@720	50Hz@1000 60Hz@900	50Hz@1000 60Hz@900	50Hz@1000 60Hz@900
燃油消耗率 (L/h) Fuel Consumption	131	154.3	207.6	261.9	327.4

Note : All engine rating data based on ISO 3046/1;

Reference conditions: Ambient 25°C, Total Barometric Pressure:100kPa, Relative humidity 30%, Intercooler coolant in:25 °C;
Fuel characteristics: Related density: 0.84±0.005, Lower heat value:42700kj/kg, Consumption tolerance: +5%;
Power: An overload of 10% is permitted for one hour in every twelve hours of operation.

宁波中策动力机电集团有限公司

地址：宁波市江北区海川路123号
电话：+86-574-87262687,86687888
传真：+86-574-87262666
Http:// www.ningdong.com

销售分公司：

地址：宁波市江北区海川路99号
电话：0574-87357283, 87660753
传真：0574-87355091

Oversea sales:

Add: No.99,Haichuan Road, Jiangbei, Ningbo, China
Tel: +86-574-87353265, 87677798
Fax: +86-574-87352239
E-mail: sales@ningdong.com

210 系列发电机组



产品特点:

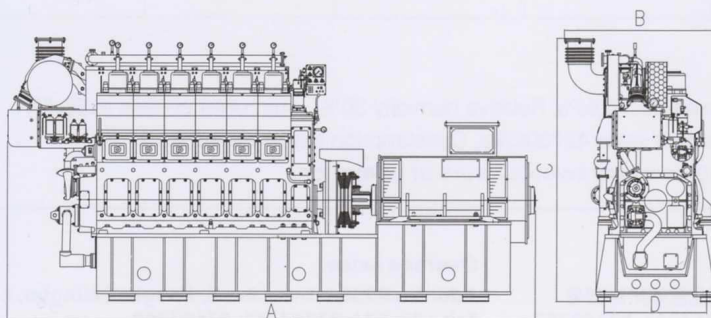
- ◆ 遵循标准: ISO8528, IEC60034, ISO3046;
- ◆ 船用柴油机驱动, 模块化设计, 可燃用重油可燃用双燃料;
- ◆ 无刷AVR自励发电机, 性能达到G3等级;
- ◆ 应用: 船用辅机, 电站(应急)机组, 成套箱式机组;
- ◆ 噪音低, 大修周期长, 运行成本省。

Characteristics:

- ◆ Meet with: ISO8528, IEC60034, ISO3046;
- ◆ Marine medium speed engine driven, modular construction, HFO and dual fuel is suitable;
- ◆ Brushless self excited alternator with AVR;
- ◆ Application: Marine gen-set, Stationary gen-set and Containerized gen-set;
- ◆ Low noise, Long TBO, Low operating cost.

电气性能 Electrical Performance

电压 Voltage	空载电压调整范围 Voltage no-load adjustment range	%	95~105	
	电压波动率 Voltage fluctuation rate	%	±1	
	稳态电压调整率 Stable voltage regulating rate	%	±2.5	
	瞬态电压调整率 Transient voltage regulating rate	%	±20~-15	
	稳定时间 Stabilizing time	s	1	
	励磁方式 Alternator Excitation method		Brushless AVR	
频率 Frequency	稳态频率(转速)调整率 Stable frequency (rev.) regulating rate	%	5	
	频率(转速)波动率 Frequency (rev.) fluctuation rate	%	±0.5	
	瞬态频率调整率 Transient frequency regulating rate	%	±10	
	稳定时间 Stabilizing time	s	< 5	
	调频方式 Frequency regulating method		Auto / Manual	
保护 Protection	超速 Over speed	115% Nr A, T, S	逆功率 Reverse P.	-9.6% Pn A, T
	滑油压力 LO. P	0.25MPa A, 0.15MPa T, S	过电流 Over current	130% In A, T
	淡水温度 FW T.	90°C A, 95°C T, S	过电压 Over voltage	120% V A, T
	滑油温度 LO. T	90°C A	过负荷 Over load	110% In A



Gen-set Dimension (Approx.)					
型号 Model	A mm	B mm	C mm	D mm	重量(千克) Weight(kg)
500GF	5950	1540	2890	1170	17000
600GF	5950	1540	2890	1170	17500
800GF	5950	1540	2890	1170	18200
1000GF	6370	1750	2994	1170	19500
1250GF	6600	1750	2994	1170	21000