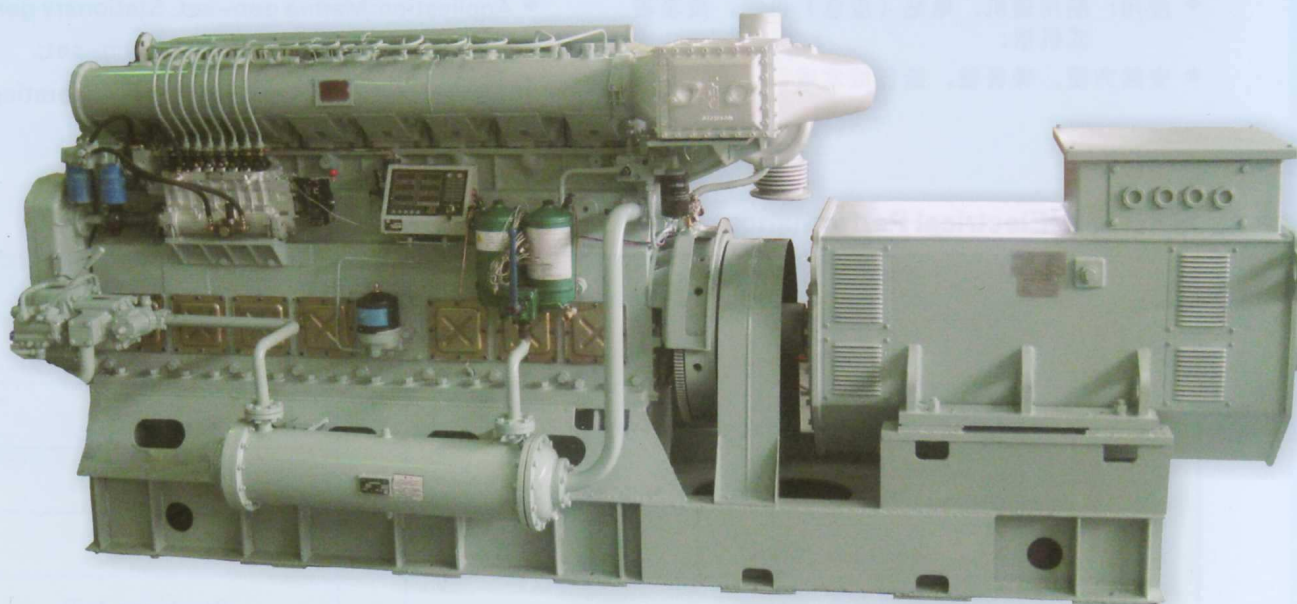


## 17/20 Engine Driven Diesel Generator



### 主要技术规格 Main Specifications

机组型号 Generator Model	300GF	350GF	400GF	500GF
机组额定功率 (kW) Rated Output	300	350	400	500
柴油机型号 Engine Model	N6170ZLD4	N6170ZLD13	N8170ZLD1	N8170ZLD4
缸径x行程 (mm) BorexStroke	170x200			
柴油机型式 Engine Type	四冲程、直列式、直接喷射、增压中冷 4-Stroke, Inline, Direct Injection, Turbocharged, Intercooled			
柴油机额定功率 (kW) Engine Rated Power	330	400	450	600
转速 (rpm) Speed	50Hz@1000 60Hz@1200	50Hz@1500 60Hz@1200	50Hz@1000 60Hz@1200	50Hz@1500
燃油消耗率 (L/h) Fuel Consumption	78.6	91.6	104.8	133.9

**Note :** All engine rating data based on ISO 3046/1;

Reference conditions: Ambient 25°C, Total Barometric Pressure:100kPa, Relative humidity 30%, Intercooler coolant in:25 °C;

Fuel characteristics: Related density: 0.84±0.005, Lower heat value:42700kj/kg, Consumption tolerance: +5%;

Power: An overload of 10% is permitted for one hour in every twelve hours of operation.

宁波中策动力机电集团有限公司

地址：宁波市江北区海川路123号

电话：+86-574-87262687,86687888

传真：+86-574-87262666

Http:// www.ningdong.com

销售分公司：

地址：宁波市江北区海川路99号

电话：0574-87357283, 87660753

传真：0574-87355091

Oversea sales:

Add: No.99,Haichuan Road, Jiangbei, Ningbo, China

Tel: +86-574-87353265, 87677798

Fax: +86-574-87352239

E-mail: sales@ningdong.com

# 170 系列发电机组



## 产品特点:

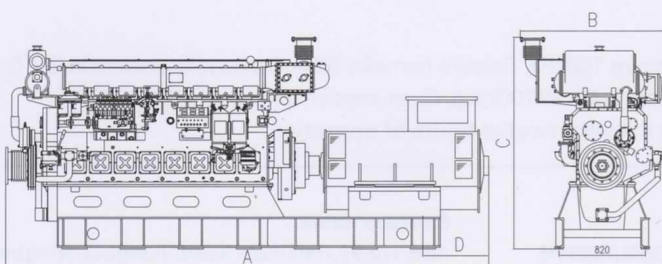
- ◆ 遵循标准: ISO8528, IEC60034, ISO3046;
- ◆ 中速船用柴油机驱动;
- ◆ 无刷AVR自动发电机, 性能达到G3等级;
- ◆ 应用: 船用辅机, 电站(应急)机组, 成套箱式机组;
- ◆ 安装方便, 噪音低, 运行成本省。

## Characteristics:

- ◆ Meet with: ISO8528, IEC60034, ISO3046;
- ◆ Marine medium speed engine driven;
- ◆ Brushless self excited alternator with AVR;
- ◆ Application: Marine gen-set, Stationary gen-set and Containerized gen-set;
- ◆ Easy installation, Low noise, Low operating cost.

## 电气性能 Electrical Performance

电压 Voltage	空载电压调整范围 Voltage no-load adjustment range	%	95~105
	电压波动率 Voltage fluctuation rate	%	±1
	稳态电压调整率 Stable voltage regulating rate	%	±2.5
	瞬态电压调整率 Transient voltage regulating rate	%	±20~-15
	稳定时间 Stabilizing time	s	1
	励磁方式 Alternator Excitation method		Brushless AVR
频率 Frequency	稳态频率(转速)调整率 Stable frequency (rev.) regulating rate	%	5
	频率(转速)波动率 Frequency (rev.) fluctuation rate	%	±0.5
	瞬态频率调整率 Transient frequency regulating rate	%	±10
	稳定时间 Stabilizing time	s	< 5
	调频方式 Frequency regulating method		Auto / Manual
保护 Protection	超速 Over speed	115% Nr A, T, S	逆功率 Reverse P. -9.6% Pn A, T
	滑油压力 LO. P	0.25MPa A, 0.15MPa T, S	过电流 Over current 130% In A, T
	淡水温度 FW T.	80°C A, 85°C T, S	过电压 Over voltage 120% V A, T
	滑油温度 LO. T	90°C A	过负荷 Over load 110% In A



Gen-set Dimension (Approx.)					
型号 Model	A mm	B mm	C mm	D mm	重量(千克) Weight(kg)
300GF	3740	1550	2015	548	5800
350GF	3965	1550	2015	623	5950
400GF	4575	1550	2015	623	6950
500GF	4450	1565	2015	560	6430